



1. APPLICATION

A. Wood poles are used to support overhead conductors and electrical distribution equipment.

2. REFERENCE STANDARDS

A. Shall equal or exceed the requirements of the latest editions, revisions, and amendments to ANSI O5.1 “American National Standard for Wood Poles – Specifications and Dimensions”, AWP Standards U1, P8, and P9 for pentachlorophenol treatment.

3. PRODUCTS

A. Wood:

- 1) Douglas Fir, - shall be through-bored per standard detail ES4-8.1100.04, full length treated, and heat sterilized by heating the pith center of the pole for one hour at not less than 150 degrees F.
- 2) Western Red Cedar – shall be incised as described below and treated from 2 feet above ground line to the butt. See standard details for location of the ground line.

B. Preservative: Pentachlorophenol

Wood	Preservative Retention, lbs./ft ³	Preservative Penetration, inches from surface
Douglas Fir	0.60	0.75
Western Red Cedar	1.0	0.50, in incised zone

C. Incising: All cedar poles shall be incised 2 feet above the ground line to 4 feet below with a pattern and depth sufficient to insure uniform preservative penetration of the total sapwood in the incised area.

MATERIAL SPECIFICATION		
EUGENE WATER & ELECTRIC BOARD		
WOOD POLES	Sept 19, 2016	REV.
	ES4-8.1100	1
ENGINEERING REVIEW <u>JZO</u>	STANDARDS COMMITTEE APPROVAL <u>LMW</u>	Page 1 of 6

D. Holes and Gains: As shown in Standard Details and performed prior to preservative treatment.

1) Holes

- a) Holes through same side of pole must be parallel and in the same plane.
- b) Tolerance - Holes on the gain, $\pm 1/8$ " from the centerlines of the pole, on the side opposite the gain, $\pm 1/4$ " from the centerlines of the pole location – measured from the top of the pole gain side, $\pm 1/4$ " opposite side, $\pm 1/2$ ", diameter, $\pm 1/16$ ".

2) Gains

- a) Shall be flat with plane at right angles to bolt holes.
- b) Tolerance – Shall be parallel with centerline of pole $\pm 1/2$ ".

E. Pole Star: Pole Star-Locks shall be installed on all poles prior to preservative treatment. Pole classes 3, 4, or 5 shall receive a 5" star, and pole classes 1, 2 or H a 6" star.

2. TESTS

A. Shall be tested per the applicable standards.

3. WARRANTY

- A. Provide a warranty period of 12 months, minimum after the date of acceptance.
- B. Vendor shall warrant the wood poles be free from defects in material or workmanship, and shall provide a replacement pole for any pole deemed defective.

4. PACKAGING AND DELIVERY

A. The vendor shall insure the proper protection from damage during transit. Any damage during transit shall be the vendor's responsibility to repair, or replace with new.

5. SUBMITTALS

A. If requested, vendor shall provide a drawing for initial product approval, or approval of subsequent changes before shipment of product.

MATERIAL SPECIFICATION EUGENE WATER & ELECTRIC BOARD		
WOOD POLES	Sept 19, 2016	REV.
	ES4-8.1100	1

Page 2 of 7

6. EWEB STORES INFORMATION

A. This specification shall be used to purchase the material with the stock codes and associated standard detail numbers listed below.

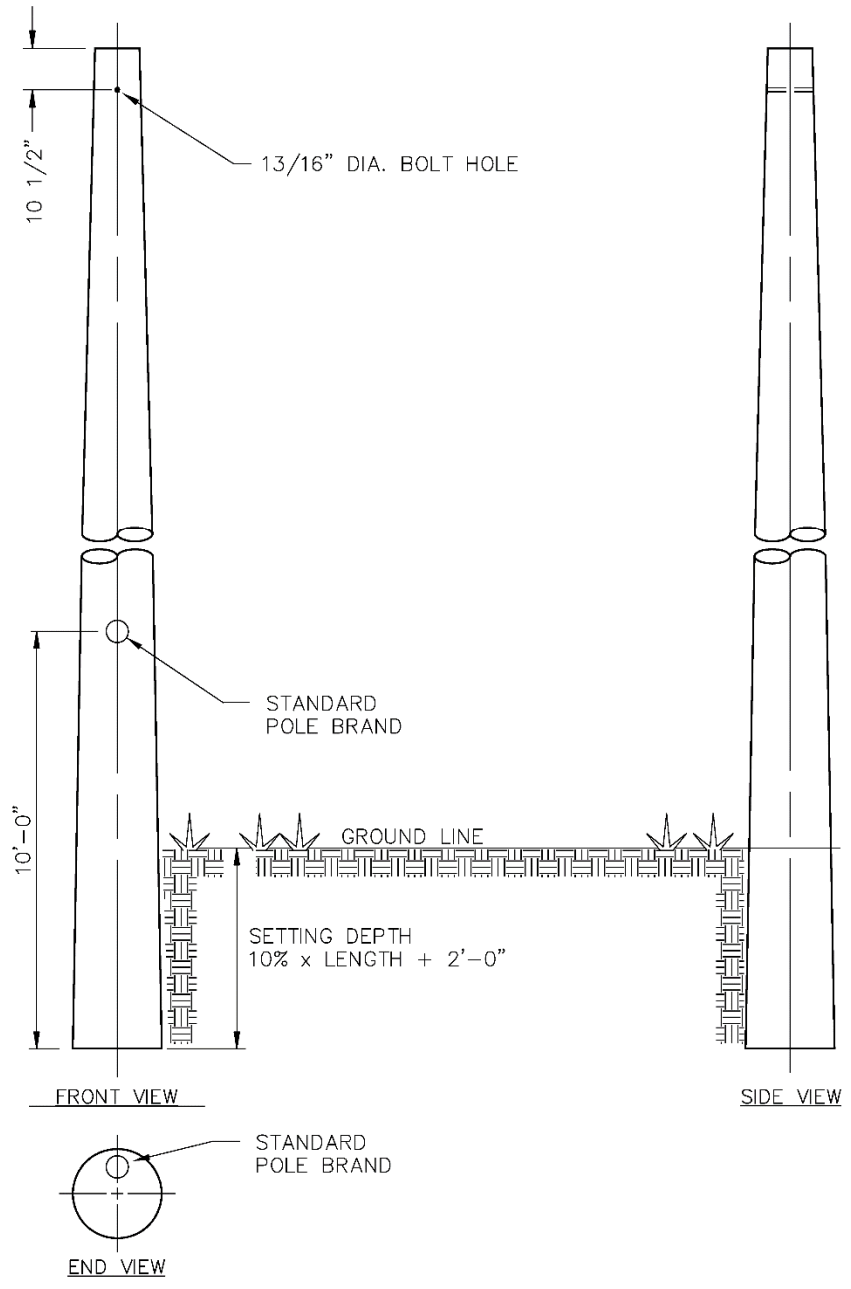
<u>Stock Code</u>	<u>Standard Detail No.</u>
482-0001621	ES4-8.1100.01
482-0001622 thru 482-0001627	ES4-8.1100.02
482-0005965 thru 482-0005966	ES4-8.1100.02
482-0001628 thru 482-0001644	ES4-8.1100.03

MATERIAL SPECIFICATION
EUGENE WATER & ELECTRIC BOARD

WOOD POLES

Sept 19, 2016 **REV.**

ES4-8.1100 1



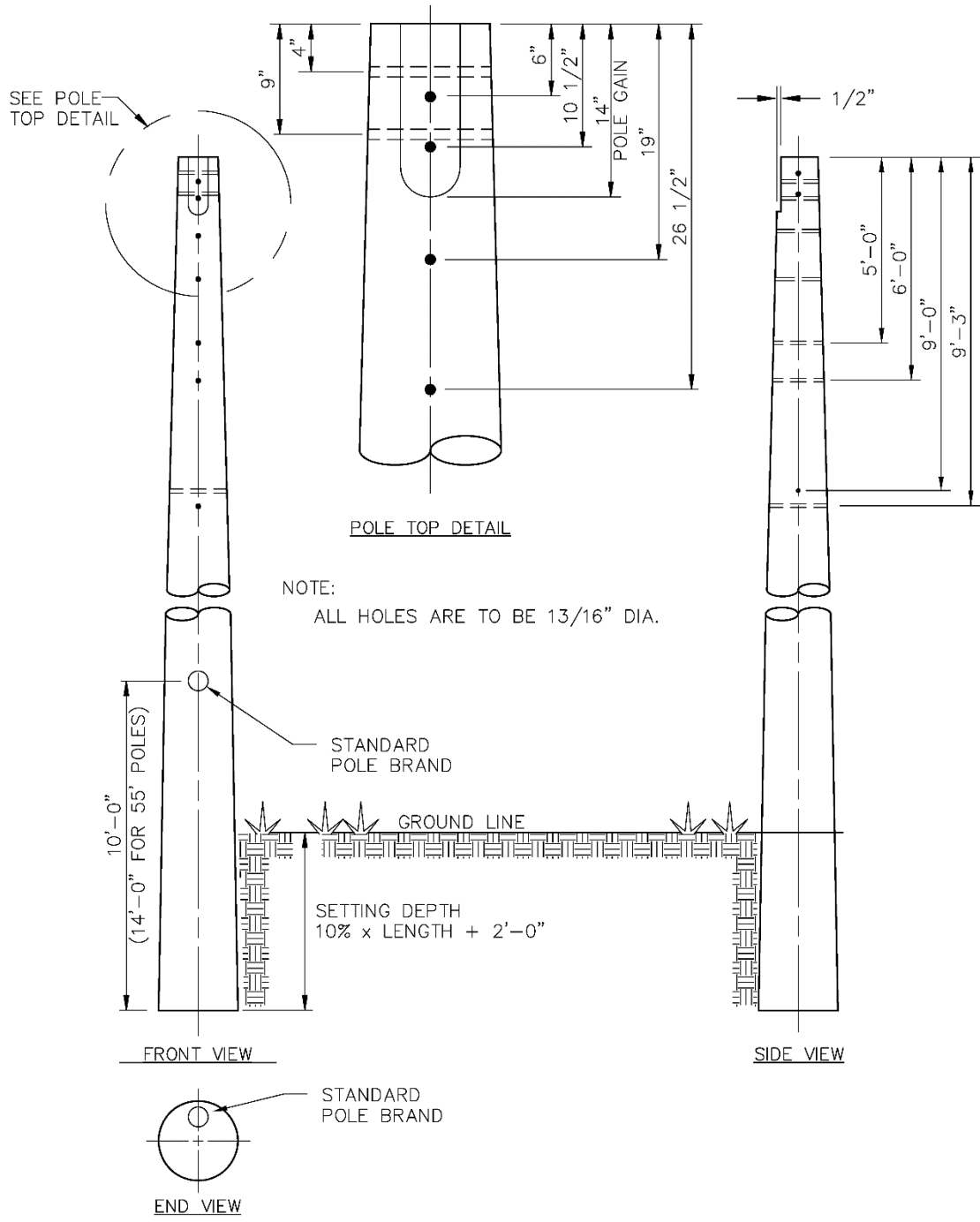
NOTE: SEE ES4-8.1100.04 FOR THROUGH BORING REQUIREMENTS FOR DOUGLAS FIR POLES.

35' WOOD POLES

EWEB STOCK CODE 482-0001621 FOR DOUGLAS FIR

STANDARD DETAIL ES4-8.1100.01

MATERIAL SPECIFICATION EUGENE WATER & ELECTRIC BOARD	
WOOD POLES	Sept 19, 2016 REV. ES4-8.1100 1
Page 4 of 7	



NOTE: SEE ES4-8.1100.04 FOR THROUGH BORING REQUIREMENTS FOR DOUGLAS FIR POLES.

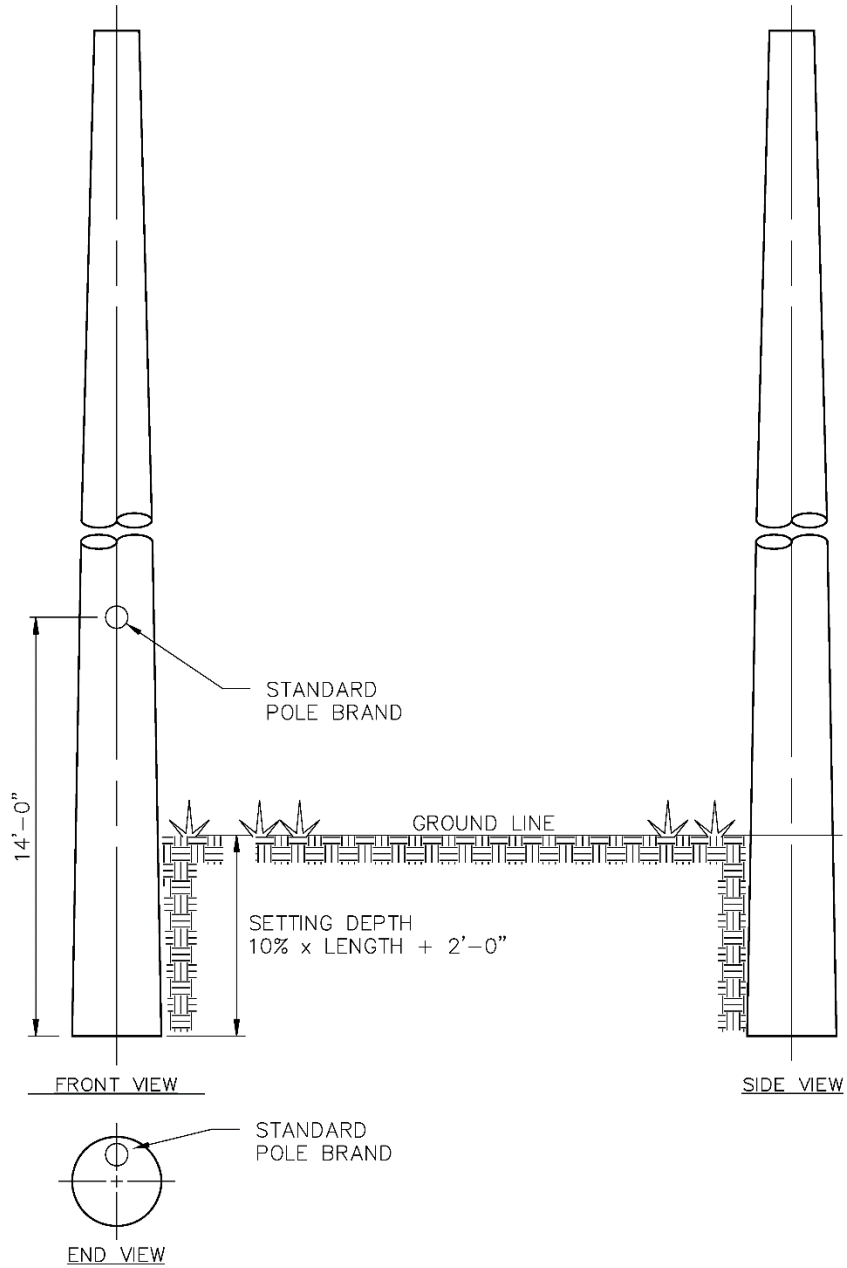
40' THRU 55' WOOD POLES

EWEB STOCK CODES: 482-0001622 THRU 482-0001627 FOR DOUGLAS FIR

482-0005965 AND 482-0005966 FOR WESTERN RED CEDAR

STANDARD DETAIL ES4-8.1100.02

MATERIAL SPECIFICATION	
EUGENE WATER & ELECTRIC BOARD	
WOOD POLES	Sept 19, 2016 REV.
	ES4-8.1100 1
	Page 5 of 7



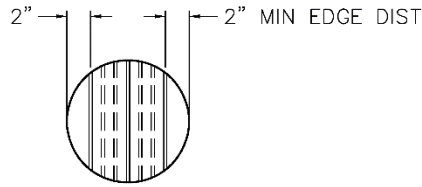
NOTE: SEE ES4-8.1100.04 FOR THROUGH BORING REQUIREMENTS FOR DOUGLAS FIR POLES.

60' AND LONGER WOOD POLES

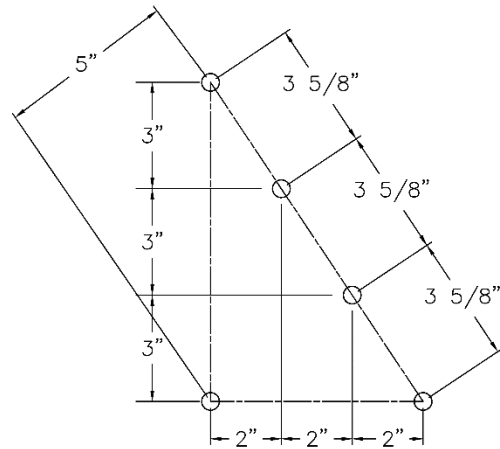
EWB STOCK CODES 482-0001628 THRU 482-0001644 FOR DOUGLAS FIR

STANDARD DETAIL ES4-8.1100.03

MATERIAL SPECIFICATION EUGENE WATER & ELECTRIC BOARD		
WOOD POLES	Sept 19, 2016	REV.
	ES4-8.1100	1
Page 6 of 7		

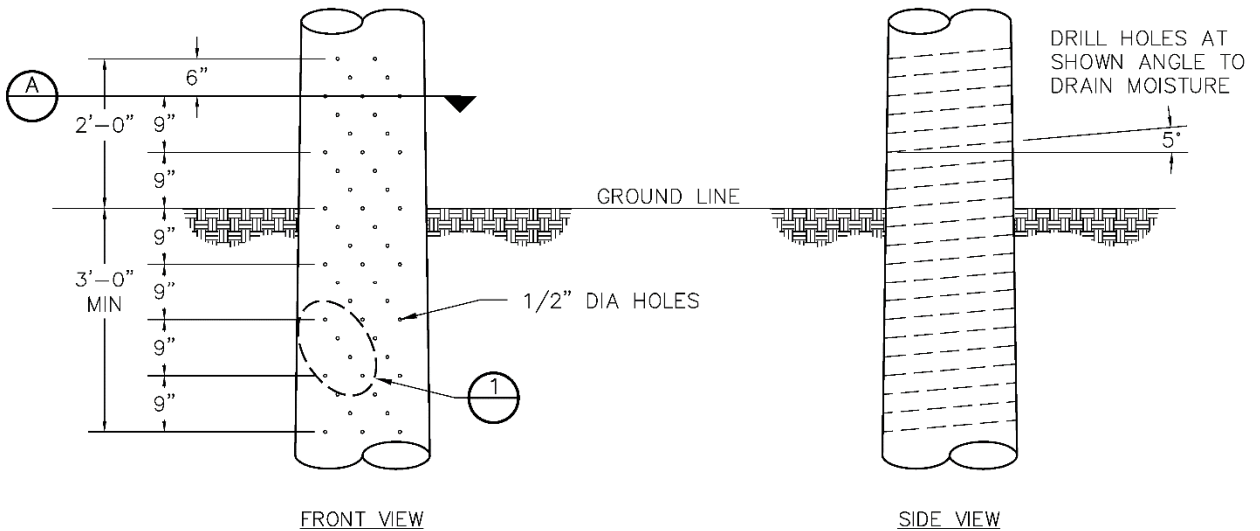


SECTION A



DETAIL 1

PATTERN FOR THROUGH-BORE HOLE DRILLING TEMPLATE



THROUGH BORING FOR DOUGLAS FIR WOOD POLES
STANDARD DETAIL ES4-8.1100.04

MATERIAL SPECIFICATION EUGENE WATER & ELECTRIC BOARD		Sept 19, 2016	REV.
WOOD POLES		ES4-8.1100	1
		Page 7 of 7	